



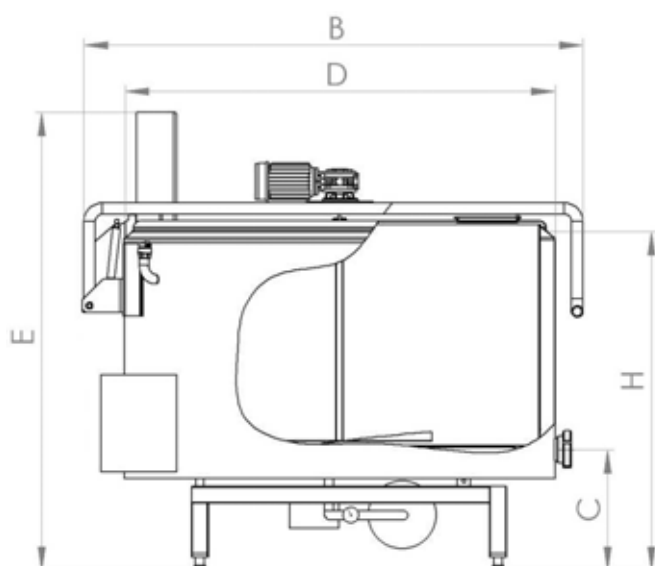
# INDEX

Brewing kettle BK		Page 91
Lauter tank LT		Page 93
Brewing cistern BC		Page 94
Lauter cistern LC		Page 95
Brewing block BH		Page 96
Brewing block BHW		Page 97
Brewing block BHB		Page 98
Fermentation tank FU(P)		Page 99
Fermentation tank FT(P)		Page 100
Maturation tank MT		Page 100
Self priming pumps		Page 102

# Brewing kettle type BK 100 - 1500

## Basic equipment - description:

- three part, **energy saving insulated coat of the kettle**, made of stainless steel W.Nr.1.4301 (AISI 304)
- mechanism for the inclination of the kettle to the outflow (BK 100, 200 and 300) and inclined bottom against the outflow (BK 500, 650, 1000, 1500)
- one-part cover (with service hole) with a spring-hinge for easier lifting of the cover
- outflow DN 50 with a butterfly valve
- special stirrer with 23 rpm
- water circulation pump for the circulation of heating water, expansion vessel, safety valve, manometer (without heat exchanger for cooling; 500 – 1500 l)
- control panel with a GPC 145 processor for the **automatic regulation** of heating (possibility of setting 6 temperatures of heating and 5 duration times)



Brewery

Type	Dimensions (mm)					Weight (kg)
	D	H	C	B	E	
BK 100	Ø 720	930	575	860	1350	125
BK 200	Ø 820	1010	475	980	1380	170
BK 300	Ø 1000	1010	475	1150	1450	230
BK 500	Ø 1120	1030	330	1270	1450	310
BK 650	Ø 1280	1010	330	1430	1500	360
BK 1000	Ø 1540	1030	330	1750	1600	465
BK 1500	Ø 1540	1350	330	1750	1600	

## Executions:

### E – Heating up to 100°C

- heating with **electrical heaters** 6 – 45 kW
- power supply 400V 3N 50Hz

Label	Heating power (kW)*	Code	Delivery
BK 100 E	9	2.000.01	
BK 200 E	18	2.000.02	
BK 300 E	20	2.000.03	
BK 500 E	30	2.000.04	
BK 650 E	30	2.000.05	
BK 1000 E	45	2.000.06	
BK 1500 E	60	2.000.07	

\* Recommended heating power of electrical heaters (if allowed by the house electrical installation)

### C – Heating up to 100°C

- connections for an **external heating water system**
- electromotor / electro-magnetic valves
- power supply 230V 50Hz

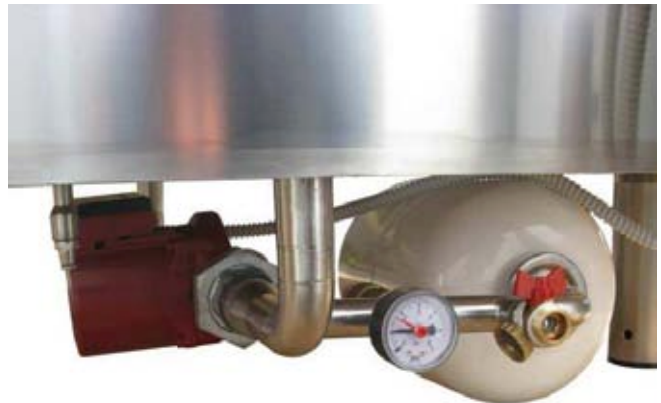
Label	Heating power (kW)**	Code	Delivery
BK 100 C	35	2.000.10	
BK 200 C	35	2.000.11	
BK 300 C	35	2.000.12	
BK 500 C	35/65	2.000.13	
BK 650 C	65	2.000.14	
BK 1000 C	65/95	2.000.15	
BK 1500 C	95	2.000.16	

\*\* Recommended power for the preparation of hot water with an oil or gas powered heating boiler. Preparation of hot water is not included.

### EC – Heating up to 100°C

- heating with **electrical heaters** 4 – 30 kW
- connections for an **external heating water system**
- electromotor/electro-magnetic valves for the choice of the source of heating
- power supply 400V 3N 50Hz

Label	Heating power (kW)	Code	Delivery
BK 100 EC	9 +	2.000.20	
BK 200 EC	15 +	2.000.21	
BK 300 EC	18 +	2.000.22	
BK 500 EC	24 +	2.000.23	
BK 650 EC	24 +	2.000.24	
BK 1000 EC	30 +	2.000.25	
BK 1500 EC	45 +	2.000.26	



Water connections - type E

## Additional equipment:

Kettle	Support on wheels	Support on adjustable wheels	Working platform	Stirrer speed regulation	Whirlpool module	Wooden box
100 l	1.300.38	1.300.48	1.300.90	1.305.60	2.000.30	1.306.71
200 l	1.300.39	1.300.49	1.300.91	1.305.60	2.000.30	1.306.72
300 l	1.300.40	1.300.50	1.300.92	1.305.60	2.000.30	1.306.73
500 l	1.300.42	/	1.300.94	1.305.61	2.000.31	1.306.75
650 l	1.300.43	/	1.300.95	1.305.61	2.000.31	1.306.76
1000 l	1.300.45	/	1.300.97	1.305.62	2.000.32	1.306.78
1500 l	1.300.51	/	1.301.05	1.305.62	2.000.32	1.306.81

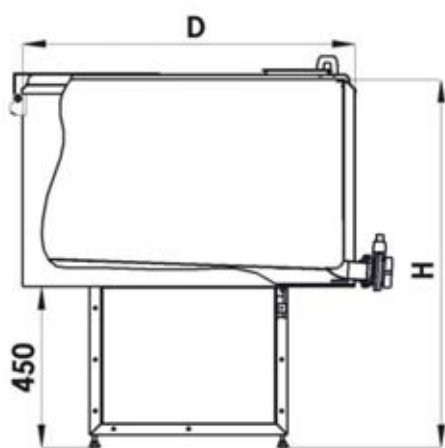
Designation	Code
DN 65 outflow	1.304.34
DN 80 outflow	1.304.35
Controller MC 1	1.305.80
Controller Visio 100	1.305.81
Module for choosing the power of heating - 2 levels (type E and EC, under 18kW)	1.305.30
Module for choosing the power of heating - 3 levels (type E and EC, over 18kW)	1.305.33
Module for working without the controller	1.305.35
Stainless steel control panel	1.306.30



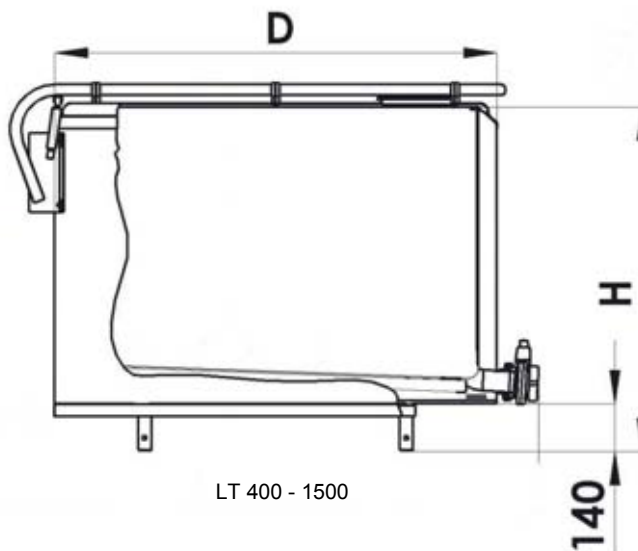
# Lauter tank type LT 100 - 1500

## Basic equipment – description:

- **insulated coat of the kettle**, made of stainless steel W.Nr.1.4301 (AISI 304) on a stable support with an inclined bottom 2.5° against the outflow
- **one-part / two-part perforated plate on the bottom (1,5 mm)**
- one-part cover (with service hole) with a spring-hinge for easier lifting of the cover
- DN 50 outflow with butterfly valve
- **without** motoreducer, stirrer and control panel



LT 100 - 300



LT 400 - 1500

Type	Dimensions		Code	Option - side service door	Option - rake stirrer (5-15 rpm), console, two part cover
	ΦD outside	H			
LT 100	620	1050	2.000.50	/	/
LT 200	760	1100	2.000.51	/	/
LT 300	1000	1100	2.000.52	2.005.01	/
LT 400	1100	800	2.000.53	2.005.02	2.005.40
LT 500	1100	880	2.000.54	2.005.03	2.005.41
LT 650	1280	880	2.000.55	2.005.04	2.005.42
LT 800	1280	1050	2.000.56	2.005.05	2.005.43
LT 1000	1550	900	2.000.57	2.005.06	2.005.44
LT 1500	1550	1250	2.000.58	2.005.07	2.005.45



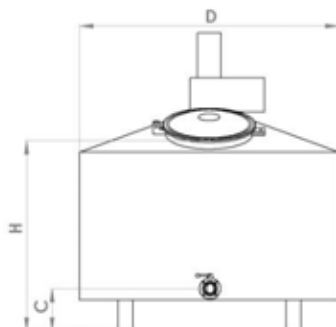


# Brewing cistern type BC 500 - 3000

## Basic equipment - description:

- three part, **energy saving insulated coat of the kettle**, made of stainless steel W.Nr.1.4301 (AISI 304)
- inclined bottom against the outflow
- welded cover (with service hole)
- washing head
- outflow DN 50 with a butterfly valve
- special stirrer with 23 rpm
- water circulation pump for the circulation of heating water, expansion vessel, safety valve, manometer (without heat exchanger for cooling)
- control panel with a GPC 145 processor for the **automatic regulation** of process heating (possibility of setting 6 temperatures of heating and 5 duration times)

Label	Dimensions (mm)			Weight (kg)
	D	H	C	
BC 500	1120	1150	330	
BC 650	1280	1150	330	
BC 1000	1540	1220	330	
BC 1500	1720	1300	330	
BC 2000	1920	1320	330	
BC 3000	2140	1470	330	



## Executions:

### E – Heating up to 100°C

- heating with **electrical heaters** 6 – 45 kW
- power supply 400V 3N 50Hz

Label	Heating power (kW)*	Code	Delivery
BC 500 E	30 (45)	2.001.10	
BC 650 E	30 (45)	2.001.11	
BC 1000 E	45 (60)	2.001.12	
BC 1500 E	60 (90)	2.001.13	
BC 2000 E	90	2.001.14	

\* Recommended heating power of electrical heaters (if allowed by the house electrical installation)

### C – Heating up to 100°C

- connections for an **external heating water system**
- electromotor / electro-magnetic valves
- power supply 230V 50Hz

Label	Heating power (kW)**	Code	Delivery
BC 500 C	35 (50)	2.001.20	
BC 650 C	60	2.001.21	
BC 1000 C	80 (100)	2.001.22	
BC 1500 C	100 (130)	2.001.23	
BC 2000 C	140 (180)	2.001.24	
BC 3000 C	240	2.001.25	

\*\* Recommended power for the preparation of hot water with an oil or gas powered heating boiler. Preparation of hot water is not included.

### EC – Heating up to 100°C

- heating with **electrical heaters** 4 – 30 kW
- connections for an **external heating water system**
- electromotor/electro-magnetic valves for the choice of the source of heating
- power supply 400V 3N 50Hz

Label	Heating power (kW)	Code	Delivery
BC 500 EC	24 +	2.001.30	
BC 650 EC	24 +	2.001.31	
BC 1000 EC	30 +	2.001.32	
BC 1500 EC	45 +	2.001.33	
BC 2000 EC	60 +	2.001.34	

## Additional equipment:

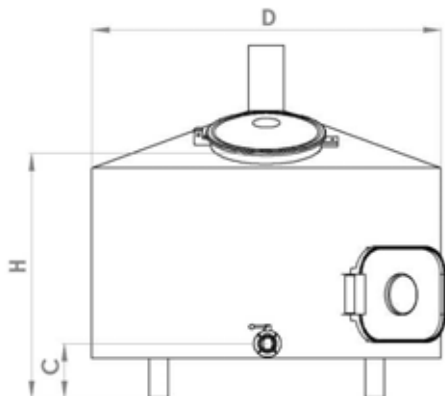
Designation (additional equip.)	Code
DN 65 outflow	1.304.34
DN 80 outflow	1.304.35
Controller MC 1	1.305.80
Controller Visio 100	1.305.81
Module for choosing the power of heating - 2 levels (under 18kW)	1.305.30
Module for choosing the power of heating - 3 levels (type E and EC, over 18kW)	1.305.33
Module for working without the controller	1.305.35
Stainless steel control panel	1.306.30

Kettle	Working platform	Stirrer speed regulation	Whirlpool module	Wooden box
500 l	1.300.94	1.305.61	2.001.41	
650 l	1.300.95	1.305.61	2.001.41	
1000 l	1.300.97	1.305.62	2.001.42	1.306.78
1500 l	1.300.99	1.305.64	2.001.43	1.306.81
2000 l	1.301.00	1.305.65	2.001.43	1.306.82
3000 l	1.301.03	1.305.66	2.001.44	

# Lauter cistern type LC 500 - 3000

## Basic equipment - description:

- **insulated kettle**, made of stainless steel W.Nr.1.4301 (AISI 304)
- welded cover with service opening
- washing head
- DN 50 outflow with butterfly valve
- **multi-part perforated plate** (filter 1,5 mm) on the bottom
- service opening on the side
- without motoreducer, stirrer and control panel



Type	Dimensions (mm)			Code	Option - rake stirrer (6-15 rpm)
	ΦD outside	H	C		
LC 500	1100	1050	160	2.001.50	2.005.41
LC 650	1280	1050	160	2.001.51	2.005.42
LC 800	1280	1150	160	2.001.52	2.005.43
LC 1000	1550	1100	160	2.001.53	2.005.44
LC 1500	1550	1350	160	2.001.54	2.005.45
LC 2000	1900	1250	160	2.001.55	2.005.46
LC 3000	2100	1520	160	2.001.56	2.005.47



# Brewing block type BH 100 - 1000

## Mash kettle:

- three part, **energy saving, insulated coat of the kettle**, made of stainless steel W.Nr.1.4301 (AISI 304) with an inclined bottom 2° against the outflow
- support on wheels (BH 100 and BH 250) or adjustable feet (BH 500, BH 1000 and BH 2000)
- welded cover with service opening
- DN 40 outflow with butterfly valve
- heating with electrical heaters (closed system)
- pump for the circulation of heating water
- steam chimney
- motoreducer for the special stirrer
- stirrer speed regulation
- heating up to **100°C** and cooling down to **20°C**

## Lauter tank:

- insulated coat of the kettle, made of stainless steel W.Nr.1.4301 (AISI 304) with a conical bottom
- welded cover with service opening
- without heating
- DN 40 outflow with butterfly valve
- steam chimney
- two part perforated plate for draining the wort
- service door by side (option)
- rake stirrer (option for BH500, BH1000)

## Pipeline:

- connections DIN 11 851
- pipelines, manual valves, pump and other equipment for the connection between tanks
- plate heat exchanger for cooling beer



## Control panel:

- electric box with a controller GPC 145 for **the automatic regulation of heating**, temperature displays and switches for setting, controlling and monitoring the pocess of beer making
- power supply 400V 3N 50Hz

Type	Power of electrical heaters (kW)	Volume lauter tank (l)	Volume mash kettle (l)	Dimensions (mm)			Weight (kg)	Code	Option - Wooden box
				Length	Width	Height			
BH 100	12	140	170	2000	860	1900		2.003.50	2.005.x0
BH 250	24	340	400	2480	1070	1900		2.003.51	2.005.x1
BH 500	30 (45)	650	800	3200	1320	2200		2.003.52	2.005.x2
BH 1000	45 (75)	1150	1200	3500	1450	2500		2.003.53	2.005.x3



Control panel



Stirrer in the mash kettle



Lauter tank - inside



Lauter tank - two part perforated plate



Option - controller BH2  
2.006.02



Option - rake stirrer  
(BH 500, BH 1000)



# Brewing block type BHW 250/500 - 1000/2000

## Mash kettle:

- three part, **energy saving, insulated coat of the kettle**, made of stainless steel W.Nr.1.4301 (AISI 304) with an inclined bottom 2° against the outflow
- support on wheels or adjustable feet
- welded cover with service opening
- DN 40 outflow with butterfly valve
- heating with electrical heaters (closed system)
- pump for the circulation of heating water
- steam chimney
- motoreducer for the stirrer with holes
- stirrer speed regulation
- heating up to **100°C**, cooling down to **20°C**

## Lauter tank:

- **insulated coat of the kettle**, made of stainless steel W.Nr.1.4301 (AISI 304) with incline bottom
- welded cover with service opening
- without heating
- DN 40 outflow with butterfly valve
- steam chimney
- two part (multi part) perforated plate for draining the wort
- side service door (option for 100/200, 250/500)
- rake stirrer (option for 100/200, 250/500, 500/1000 unit)

## Whirlpool:

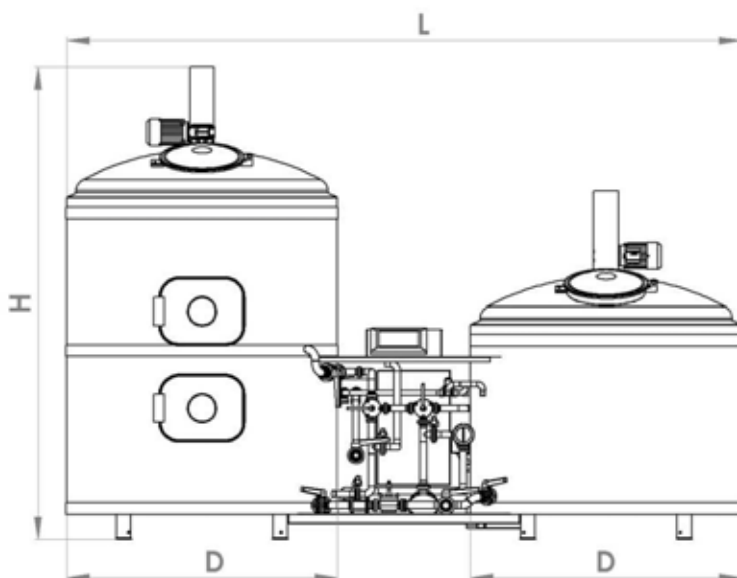
- **insulated coat of the kettle**, made of stainless steel W.Nr.1.4301 (AISI 304)
- side service door
- DN 40 outflow with butterfly valve
- without heating

## Pipeline:

- connections DIN 11 851
- pipelines, manual valves, pump and other equipment for the connection between tanks
- plate heat exchanger for cooling beer

## Control panel:

- electric box with a controller GPC 145 for the **automatic regulation of heating**, temperature displays and switches for setting, controlling and monitoring the process of beer making
- power supply 400V 3N 50Hz



Type	Heaters power (kW)	Volume mash kettle (l)	Volume lauter tank (l)	Volume whirlpool (l)	Dimensions (mm)			Weight (kg)	Code	Option - wooden box
					L	D	H			
BHW 250/500	24	340	300	300	2540	1070	1900		2.003.66	
BHW 500/1000	30	650	600	600	3120	1370	1960		2.003.67	
BHW 1000/2000	45	1250	1050	1050	3500	1450	2450		2.003.68	



# Brewing block type BHB 1000 - 3000

## Mash kettle:

- three part, **energy saving, insulated coat of the kettle**, made of stainless steel W.Nr.1.4301 (AISI 304) with an inclined bottom 2° against the outflow
- support on wheels or adjustable feet
- welded cover with service opening
- DN 40 outflow with butterfly valve
- heating with electrical heaters (closed system)
- pump for the circulation of heating water
- steam chimney
- motoreducer for the stirrer with holes
- stirrer speed regulation
- heating up to **100°C**, cooling down to **20°C**

## Lauter tank:

- **insulated coat of the kettle**, made of stainless steel W.Nr.1.4301 (AISI 304) with incline bottom
- welded cover with service opening
- without heating
- DN 40 outflow with butterfly valve
- steam chimney
- two part (multi part) perforated plate for draining the wort
- side service door (option for 100/200, 250/500)
- rake stirrer (option for 100/200, 250/500, 500/1000 unit)

## Hot water tank:

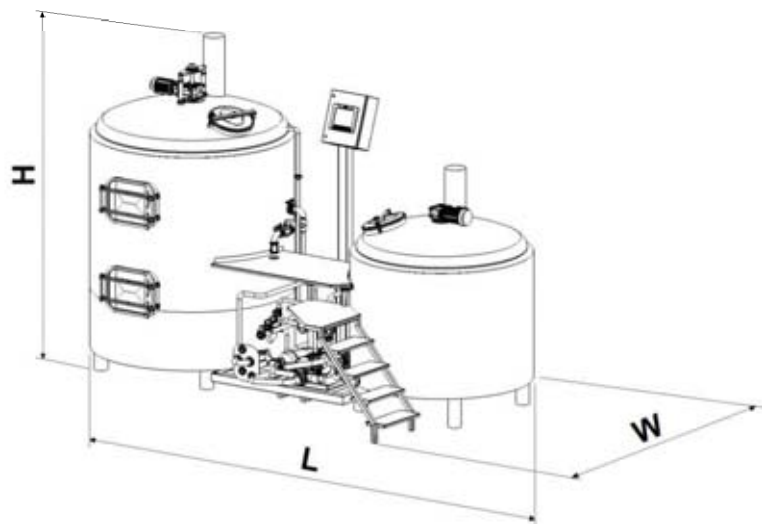
- **insulated coat of the kettle**, made of stainless steel W.Nr.1.4301 (AISI 304)
- heating with electrical heaters
- side service door
- DN 40 outflow with butterfly valve

## Pipeline:

- connections DIN 11 851
- pipelines, manual valves, pump and other equipment for the connection between tanks
- plate heat exchanger for cooling beer

## Control panel:

- electric box with a controller GPC 145 for the **automatic regulation of heating**, temperature displays and switches for setting, controlling and monitoring the process of beer making
- power supply 400V 3N 50Hz



Type	Volume mash kettle (l)	Volume lauter tank (l)	Volume hot water tank (l)	Dimensions (mm)			Weight (kg)	Code	Option - wooden box
				L	D	H			
BHZ 1000	1250	1050	1300	3500	1450	2450		2.004.50	
BHZ 2000	2400	2100	2500	4650	2400	3150		2.004.51	
BHZ 3000	3600	3200	3800	6000	3000	4200		2.004.52	

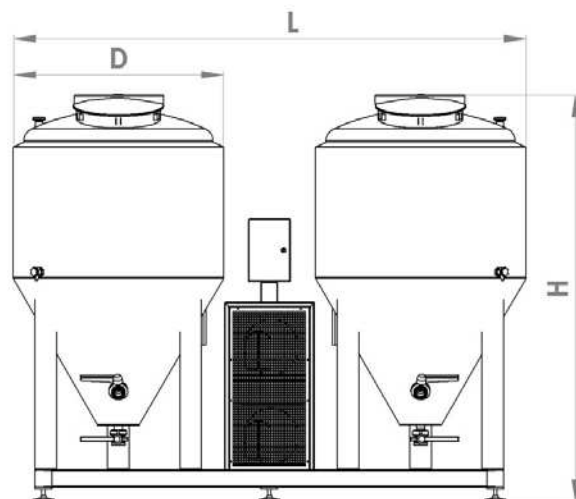


# Fermentation tank for beer type FU(P) 2×100 - 2×1000

## Block unit

### Basic equipment - description:

- vertical **insulated tank** , made of stainless steel W.Nr.1.4301 (AISI 304) with a conical bottom
- atmospheric (maximum pressure in the vessel 0 bar) and pressure (maximum pressure in the vessel 1.5 bar) executions
- support on wheels (FU 2×100 in FU2×250) or adjustable feet (FU 2×500 and FU 2×1000)
- welded cover with service opening
- DN 40 outflow with butterfly valve on the bottom of the cone
- DN 40 outflow with butterfly valve on the front side of the cone
- tap for examination
- washing head with a DN 25 connection
- DN 32 connection for an air valve (atmospheric version)
- cooling unit and electronic temperature regulation for each tank
- cooling area - wall and cone
- power supply 230V 50Hz



Brewery

Type	Dimensions (mm)			Weight	Atmospheric execution FU	Pressure execution FUP	Option - wooden box	Delivery
	D	L	H					
FU(P) 2×100	650	1650	1520	250	2.003.80	2.003.90	2.005.y5	
FU(P) 2×250	950	2350	1800	450	2.003.81	2.003.91	2.005.y6	
FU(P) 2×500	1000	2460	1950	580	2.003.82	2.003.92	2.005.y7	
FU(P) 2×1000	1100	2650	2550		2.003.83	2.003.93	2.005.y8	

Control panel	Cooling unit	Pressure execution FUP - Safety valve	DN40 outflows on the cone



## Fermentation tank for beer type FT(P) 1000 - 5000

### Basic equipment - description:

- vertical **insulated tank**, made of stainless steel W.Nr.1.4301 (AISI 304) with a conical bottom
- atmospheric (maximum pressure in the vessel 0 bar) and pressure (maximum pressure in the vessel 1.5 bar) executions
- support on adjustable feet
- welded cover with service opening
- DN intake
- DN 32 outflow with butterfly valve on the bottom of the cone
- DN 40 outflow with butterfly valve on the front side of the cone
- side tap for examination
- connection for CIP and washing head
- DN 32 connection for an air valve (atmospheric version)
- connections for cooling water
- inside temperature display
- PT 100 probe nozzle
- service door by side (option)



Type	Dimensions (mm)			Weight (kg)	Atmospheric execution FT	Pressure execution FTP	Delivery
	Inside diameter d	Outside diameter D	Height H				
FT(P) 1000	Ø 1000	Ø 1110	2300		2.004.00	2.004.10	
FT(P) 2000	Ø 1300	Ø 1410	3000		2.004.01	2.004.11	
FT(P) 3000	Ø 1430	Ø 1540	3600		2.004.02	2.004.12	
FT(P) 4000	Ø 1500	Ø 1620	4000		2.004.03	2.004.13	
FT(P) 5000	Ø 1600	Ø 1720	4200		2.004.04	2.004.14	

## Maturation tank for beer type MT 500 - 5000

### Basic equipment - description:

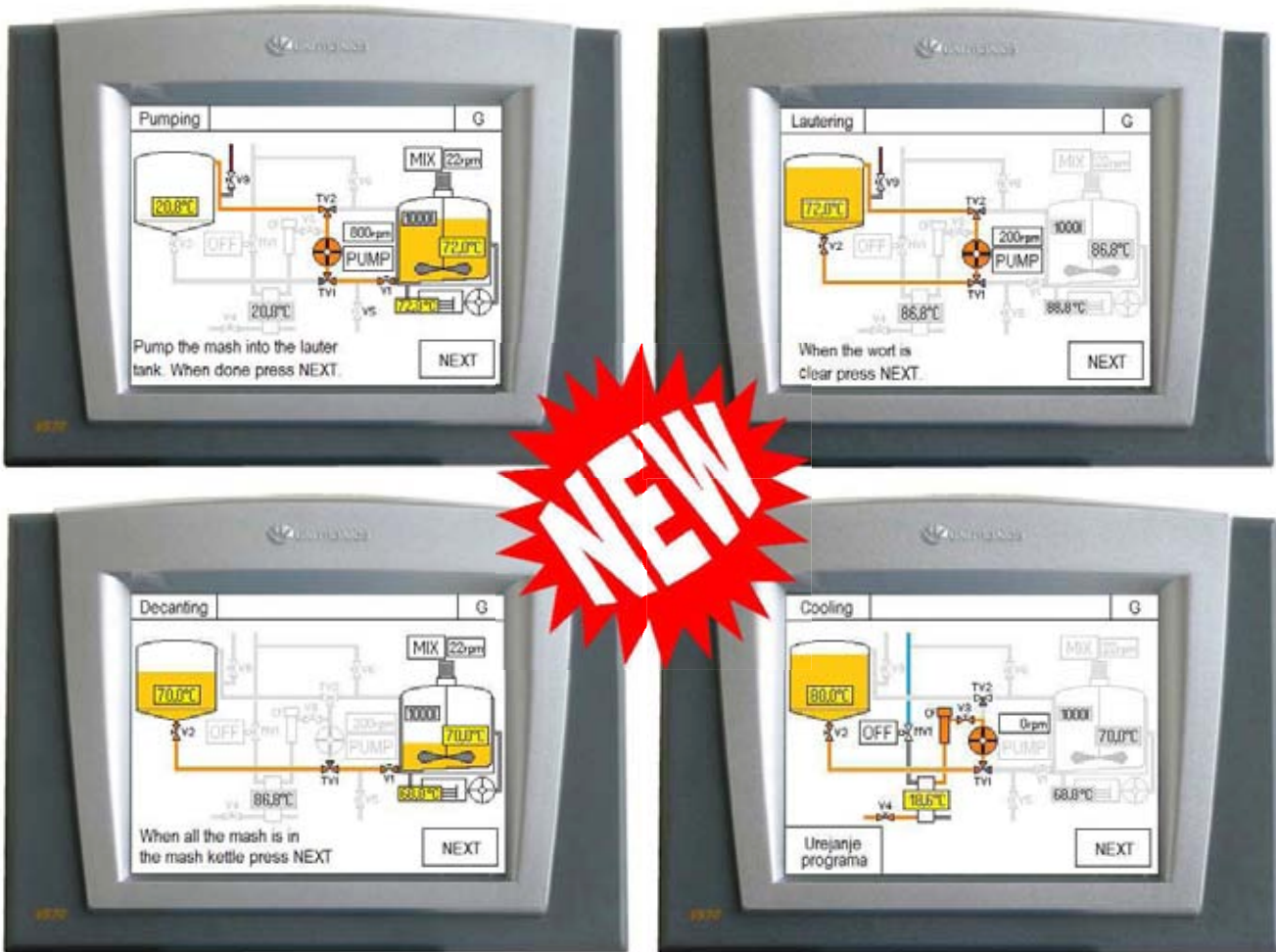
- vertical **insulated tank**, made of stainless steel W.Nr.1.4301 (AISI 304) with a conical bottom
- pressure execution - safety valve - maximum pressure in the vessel 1.5 bar
- support on adjustable feet
- welded cover with service opening
- DN 40 intake
- DN 40 outflow with butterfly valve on the bottom of the cone
- DN 40 outflow with butterfly valve on the front side of the cone
- tap for examination
- connection for CIP and washing head
- connections for cooling water
- inside temperature display
- PT 100 probe nozzle
- service door by side (option)



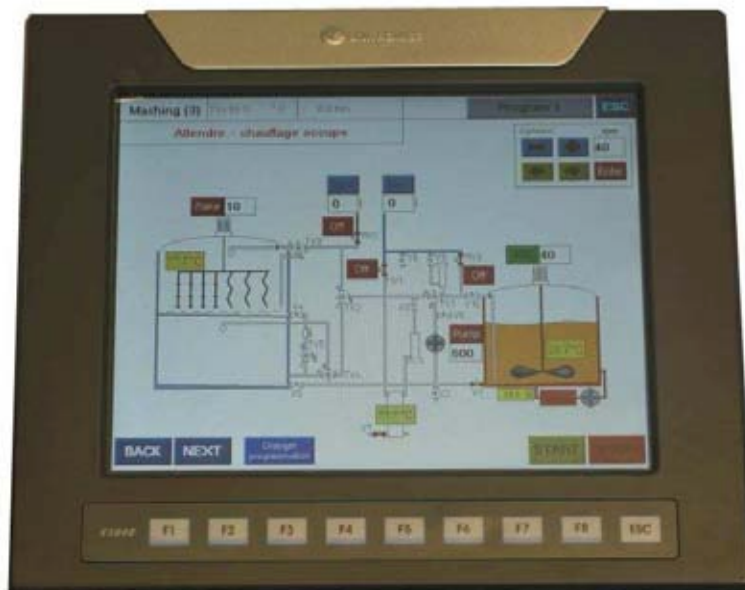
Type	Dimensions			Weight (kg)	Code	Delivery
	Inside diameter d	Outside diameter D	Height H			
MT 500	Ø 900	Ø 1010	2000		2.004.20	
MT 1000	Ø 1000	Ø 1100	2300		2.004.21	
MT 2000	Ø 1300	Ø 1400	3000		2.004.22	
MT 3000	Ø 1430	Ø 1540	3600		2.004.23	
MT 4000	Ø 1500	Ø 1600	4000		2.004.24	
MT 5000	Ø 1600	Ø 1720	4200		2.004.25	



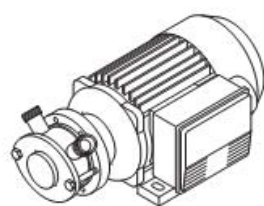
# Controller BH1 and BH2 for brewing blocks BH and BHW



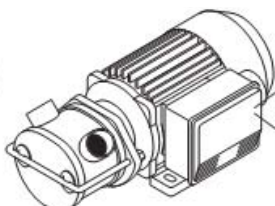
- Touch screen display 5,7" with 320×240 resolution (QVGA) or 10.4" with 800×600 resolution (SVGA)
- Graphic display of the brewing block
- Guides the user through the process of beer-making with a graphic display of the process and of the position of the valves.
- Allows the programming of 5 different mashing temperatures and duration times, the start of the stirrer for every duration time (on/off) and allows at all times to manually start/stop the stirrer and change the stirrers direction and speed
- Changing the working parameters during the use
- Recording the temperature of the process - saving the data on a SD card for exporting it on a personal computer.
- A special version combined with electromotor valves gives us full automation of the process



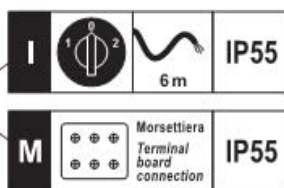
# Self priming pumps with flexible impeller type EP



EP MINI 3/4" - MDEX 1 1/4"



EP MINOR 40 - MAJOR 60 - MAXI 80

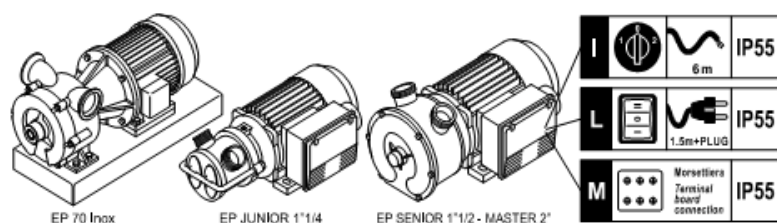


Type	Fittings	Sealing	Power supply	Power [kW]	Speed [rpm]	Max. flux [l/h]		Code	Delivery
EP MINI 3/4"	(**)	Ker.-Graf.-NBR	400V 3N 50Hz	0,37	900	1000	I	5.002.00	
EP MINI 3/4"	(**)	Ker.-Graf.-NBR	230V 50Hz	0,37	900	1000	I	5.002.01	
EP MINI 3/4"	(**)	Ker.-Graf.-NBR	400V 3N 50Hz	0,56	1400	1620	I	5.002.02	
EP MINI 3/4"	(**)	Ker.-Graf.-NBR	230V 50Hz	0,56	1400	1620	I	5.002.03	
EP MDEX 1 1/4"	(**)	Ker.-Graf.-NBR	400V 3N 50Hz	0,56	900	3840	I	5.002.04	
EP MDEX 1 1/4"	(**)	Ker.-Graf.-NBR	230V 50Hz	0,56	900	3840	I	5.002.05	
EP MDEX 1 1/4"	(**)	Ker.-Graf.-NBR	400V 3N 50Hz	0,75	1400	5760	I	5.002.06	
EP MDEX 1 1/4"	(**)	Ker.-Graf.-NBR	230V 50Hz	0,75	1400	5760	I	5.002.07	
EP MDEX 1 1/4"	(**)	Ker.-Graf.-NBR	400V 3N 50Hz	0,56-0,37	1400-700	5760-2880	I	5.002.08	
EP MINOR 40	Garolla	Ker.-Graf.-NBR	400V 3N 50Hz	1,5	900	6900	I	5.002.09	
EP MINOR 40	Garolla	Ker.-Graf.-NBR	230V 50Hz	1,5	900	6900	I	5.002.10	
EP MINOR 40	Garolla	Ker.-Graf.-NBR	400V 3N 50Hz	1,5	1400	10000	I	5.002.11	
EP MINOR 40	Garolla	Ker.-Graf.-NBR	400V 3N 50Hz	2,1-1,2	1400-900	10000-6900	I	5.002.12	
EP MINI 3/4"	(**)	Ker.-Graf.-NBR	400V 3N 50Hz	0,37	900	1000	M	5.002.13	
EP MINI 3/4"	(**)	Ker.-Graf.-NBR	400V 3N 50Hz	0,56	1400	1620	M	5.002.14	
EP MDEX 1 1/4"	(**)	Ker.-Graf.-NBR	400V 3N 50Hz	0,56	900	3840	M	5.002.15	
EP MDEX 1 1/4"	(**)	Ker.-Graf.-NBR	400V 3N 50Hz	0,75	1400	5760	M	5.002.16	
EP MINOR 40	Garolla	Ker.-Graf.-NBR	400V 3N 50Hz	1,5	900	6900	M	5.002.17	
EP MINOR 40	Garolla	Ker.-Graf.-NBR	400V 3N 50Hz	1,5	1400	10000	M	5.002.18	

## Additional equipment:

Type	Material	For pump model	Code	Delivery
"L" handle	AISI 304	EP MINI	5.002.40	
"U" handle	AISI 304	EP MDEX, EP MINOR	5.002.41	
Trolley 280×200	Zinc steel	EP MINI, EP MDEX, EP MINOR	5.002.42	
Trolley 330×240	AISI 304	EP MINI, EP MDEX, EP MINOR	5.002.43	

# Self priming pumps with stainless steel impeller type EP





Type	Fittings	Sealing	Power supply	Power [kW]	Speed [rpm]	Max. flux [l/min]		Code	Delivery
EP NEOS 3/4"	BSP-M	Ker.-Graf.-NBR	230V 50Hz	0,22	2800	29	I	5.002.19	
EP JUNIOR 1 1/4"	BSP-M	Ker.-Graf.-NBR	230V 50Hz	0,45	2800	58	I	5.002.20	
EP SENIOR 1 1/2"	BSP-M	Ker.-Graf.-NBR	230V 50Hz	0,75	1400	120	I	5.002.21	
EP SENIOR 1 1/2"	BSP-M	Ker.-Graf.-NBR	230V 50Hz	1,1	1400	120	I	5.002.22	
EP MASTER 2"	BSP-M	Ker.-Graf.-NBR	230V 50Hz	1,87	1400	230	I	5.002.23	
EP NEOS 3/4"	BSP-M	Ker.-Graf.-NBR	400V 3N 50Hz	0,26	2800	29	I	5.002.24	
EP NEOS 3/4"	BSP-M	Ker.-Graf.-NBR	400V 3N 50Hz	0,26	2800	29	M	5.002.25	
EP JUNIOR 1 1/4"	BSP-M	Ker.-Graf.-NBR	400V 3N 50Hz	0,56	2800	58	I	5.002.26	
EP JUNIOR 1 1/4"	BSP-M	Ker.-Graf.-NBR	400V 3N 50Hz	0,56	2800	58	M	5.002.27	
EP SENIOR 1 1/2"	BSP-M	Ker.-Graf.-NBR	400V 3N 50Hz	0,75	1400	120	I	5.002.28	
EP SENIOR 1 1/2"	BSP-M	Ker.-Graf.-NBR	400V 3N 50Hz	1,1	1400	120	I	5.002.29	
EP SENIOR 1 1/2"	BSP-M	Ker.-Graf.-NBR	400V 3N 50Hz	1,1	1400	120	M	5.002.30	

## Additional equipment:

Type	Material	For pump model	Code	Delivery
"L" handle	AISI 304	EP NEOS, EP JUNIOR	5.002.40	
"U" handle	AISI 304	EP SENIOR	5.002.41	
Trolley 280×200	Zinc steel	EP JUNIOR, EP SENIOR, EP MASTER	5.002.42	
Trolley 330×240	AISI 304	EP JUNIOR, EP SENIOR, EP MASTER	5.002.43	

## Fittings:

Tip Type	MINI	MIDEX	MINOR	MAJOR	MAXI
Garolla	 Non disponibile Not available	 Garolla 40	 Garolla 40 Garolla 50	 Garolla 50 Garolla 60 Garolla 70	 Garolla 70 Garolla 80 Garolla 100
DIN 11851	 DIN 25	 DIN 32 DIN 40	 DIN 40 DIN 50	 DIN 50 DIN 65	 DIN 65 DIN 80 DIN 100
BSP-M	 BSP-M 3/4"	 BSP-M 1"1/4	 BSP-M 1"1/4 BSP-M 1"1/2	 BSP-M 2"	 BSP-M 2"1/2 BSP-M 3"
SMS	 Non disponibile Not available	 SMS 38	 SMS 38	 SMS 51	 SMS 76

In the process of constant improvements we reserve the right to make technical and aesthetic modifications without prior notice! All the pictures are symbolic.